

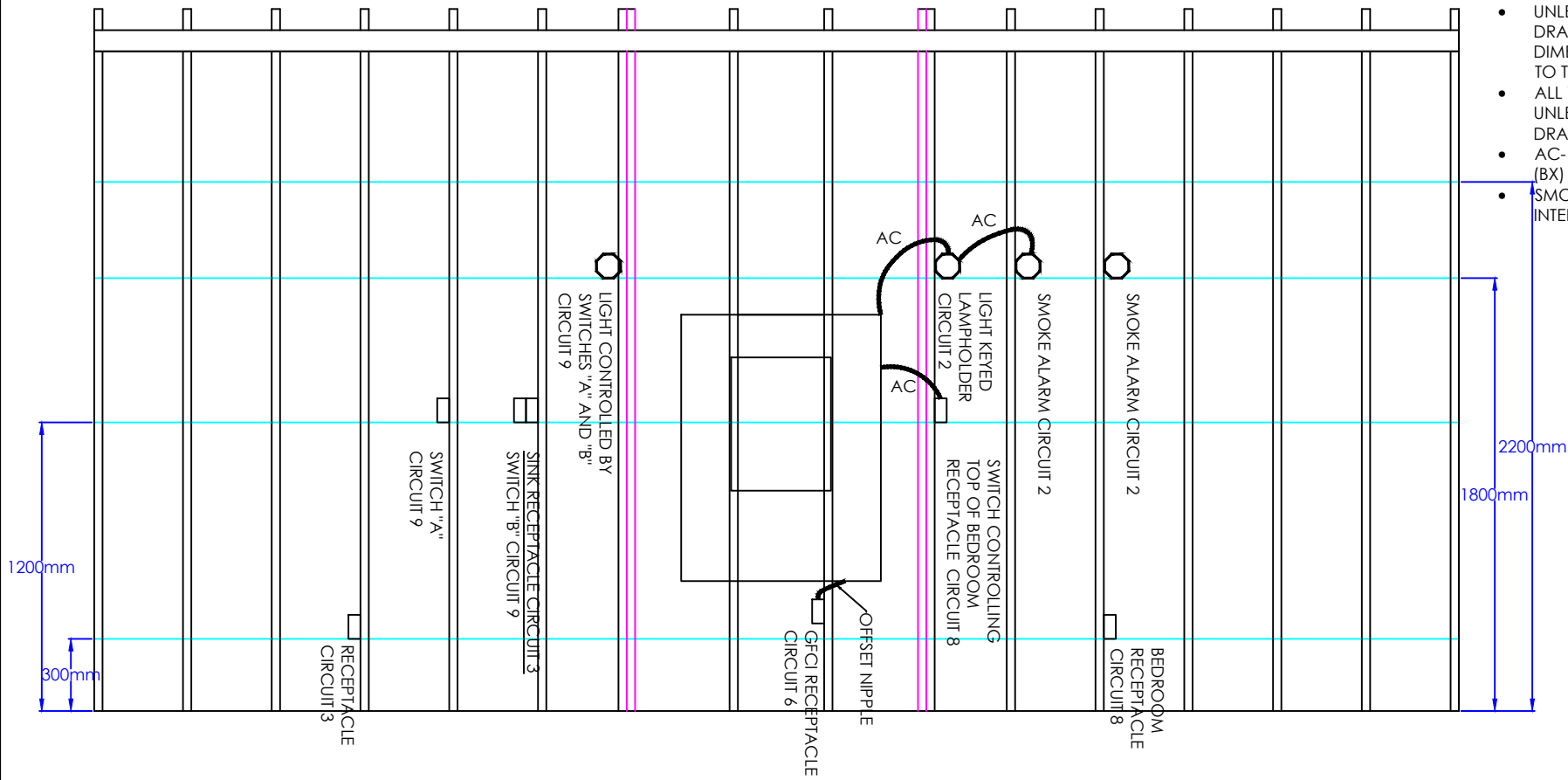
LEFT SIDE WALL

BACK WALL

RIGHT SIDE WALL

NOTES:

- ALL COMPONENTS ON THE PLYWOOD ARE SURFACE MOUNTED
- UNLESS OTHERWISE INDICATED ON DRAWING, ALL HORIZONTAL DIMENSIONS FOR COMPONENTS ARE TO THE BOTTOM OF DEVICES.
- ALL WIRING TO BE NMD90 (ROMEX) UNLESS OTHERWISE STATED ON THE DRAWING.
- AC- DENOTES ARMoured CABLE (BX)
- SMOKE ALARMS ARE INTERCONNECTED.



EL CROSSLEY
SECONDARY SCHOOL

DSBN SKILLS COMPETITION
ELECTRICAL CIRCUIT

DR: A. BELDING
DATE: DEC. 14, 2023

DWG NO.: 1
SCALE: N.T.S.